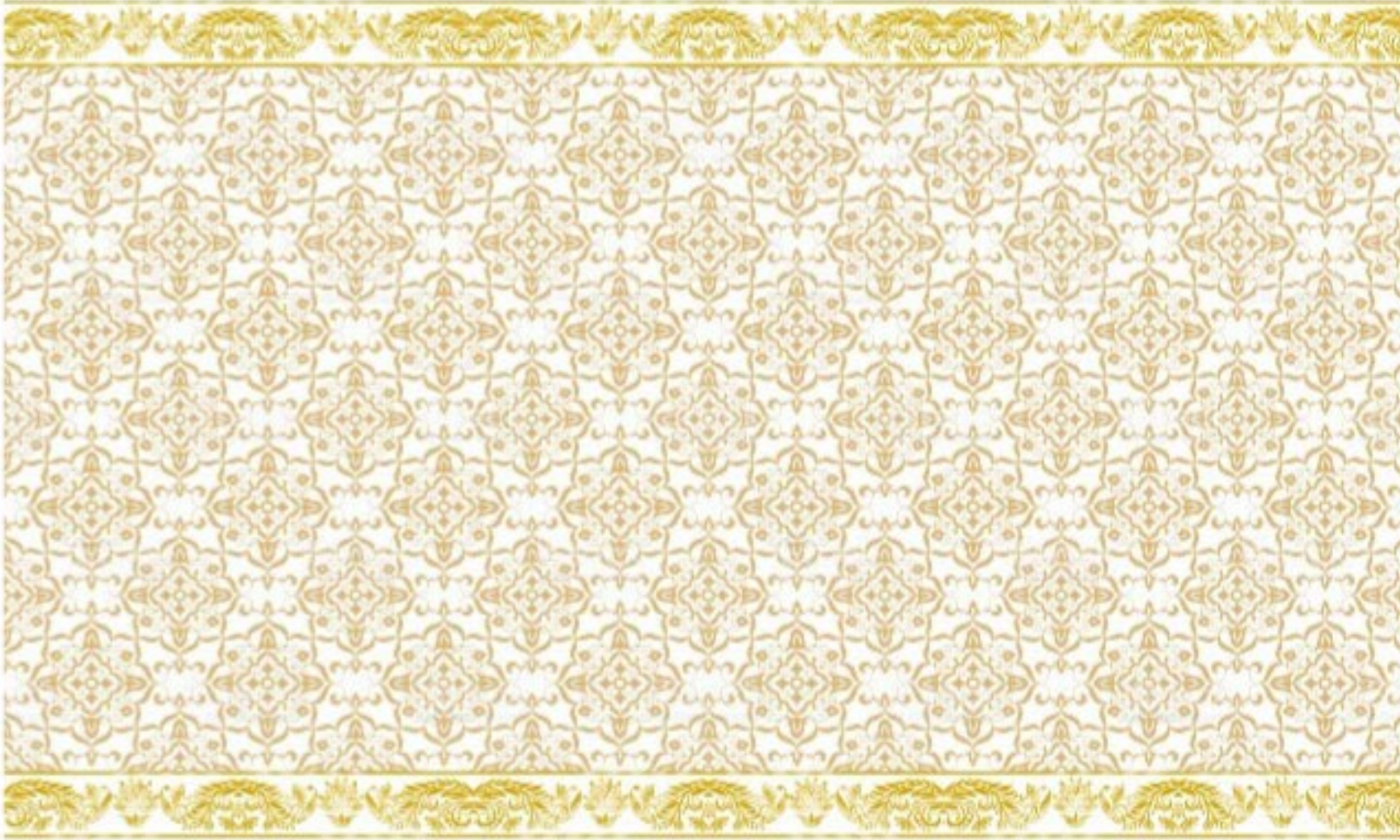




SAI KRUPA



 **KST**  
P R O M O T E R



# GROUND FLOOR - G1



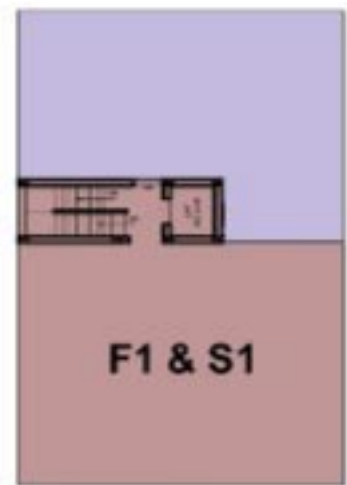






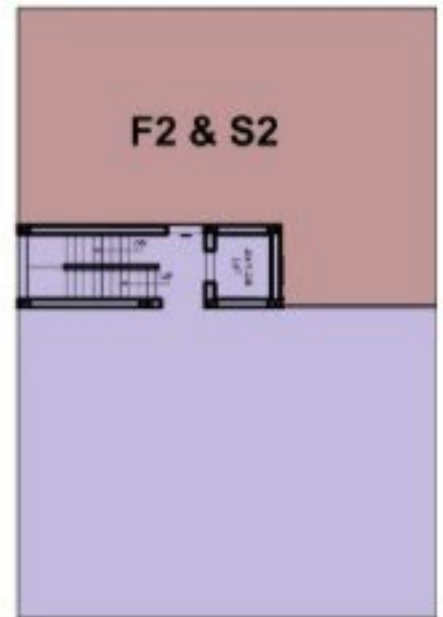
# F1 & S1

## North Facing ( 1105 Sqft )



**F2 & S2**

**East Facing ( 941 Sqft )**





**T1**  
**North Facing ( 1500 Sqft )**





Isolated / combined footing,  
R.C.C Framed structure designed by qualified professional structural Engineer.



All Interior Walls will be applied with wall putty and finished with premium paint.  
Ceiling will be finished in Ultra white.



Granite top, Stainless steel sink, wall tile upto 2' above granite slab.



Entire Flat 2'x2' Branded vitrified tiles in Flooring  
& all bathroom will be 1'x1' Anti skid tiles.



All windows are UPVC openable window with MS safety grills.



MAIN DOOR: Good Quality of Teak Wood panel finished with mela mine polish  
with Godrej locks.

OTHER DOORS: Membrane Doors with good quality teak frames.

TOILET DOORS: Foam Door.



External PVC piping ( Astarl / Prince / Equivalent ) and internal CPVC piping  
( Astral / Prince / Equivalent ). Branded Ceramic dado tiles upto 7' height.



Granite Flooring with SS Handrails.



Concealed 3 - phase Electricity supply with Branded wiring  
MCB'S adequate light, fan and sufficient power points, ROMA<sup>®</sup> / GM Switches sufficient  
light in common areas. Free inverter wiring.



Lift



Entire Building CCTV Coverage.





**No.59/31, Ground Floor Door No D, Abhaya Paradise,  
New Colony, 1st Main Road, Chrompet, Chennai - 600044.**

**Cell : 7338997722, 8270 105, 9787 307 307.**

**Sai Krupa site : Plot No.60,40th Street, Ranga Nagar, Thiruneermalai.**

**E-mail : [kstpromoter@gmail.com](mailto:kstpromoter@gmail.com)/Web : [www.kstpromoter.com](http://www.kstpromoter.com)**