



Sai Brindhavan

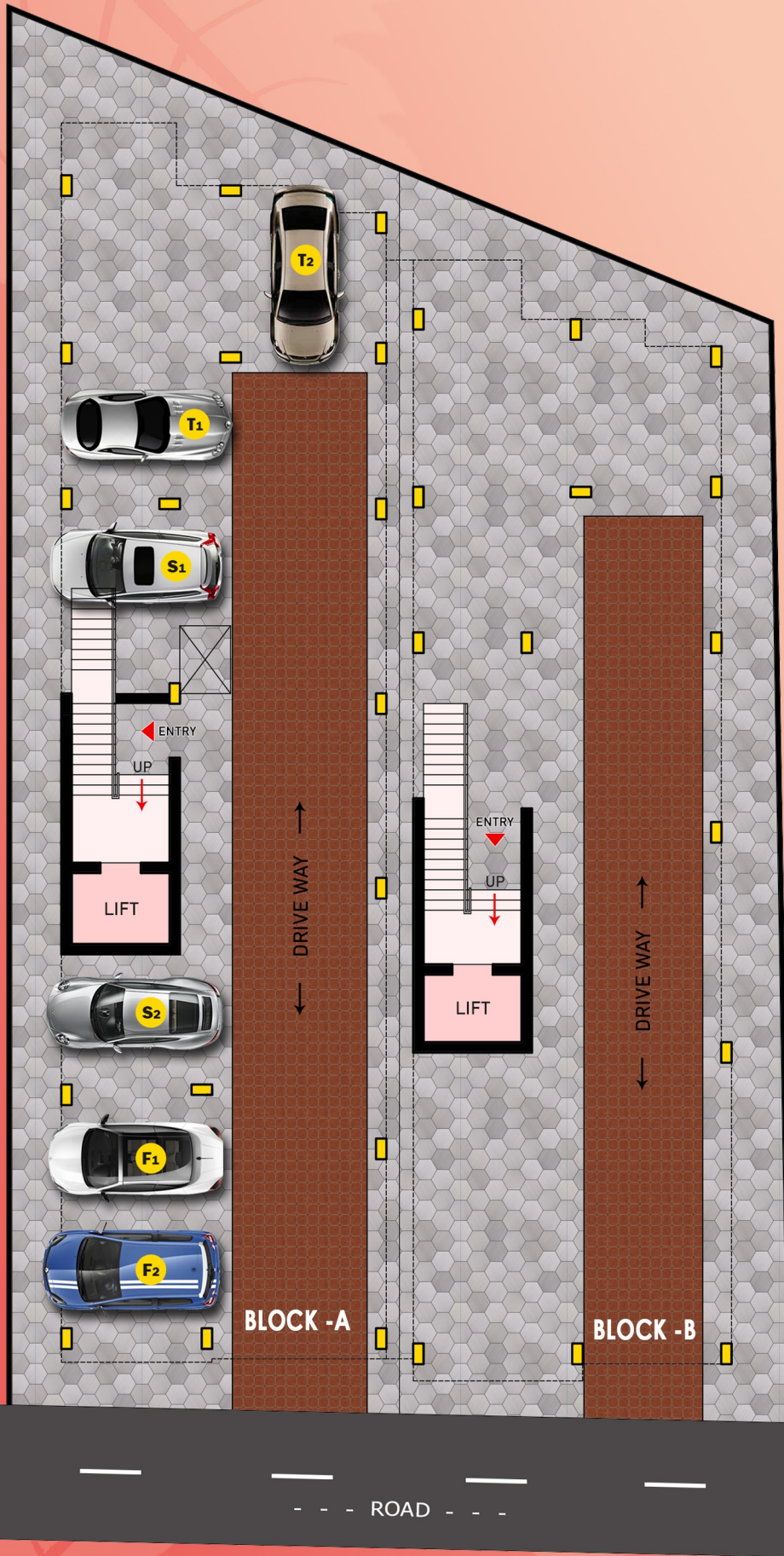
Apartment

Sai Brindhavan
Apartment





KST PROMOTER is a Real Estate Enterprise is committed to building aspirations and delivering value. In line with our philosophy of creating superior living spaces that reflect our belief, we also offer tastefully chosen plotted development spaces in selected location. This is precisely the philosophy of **KST PROMOTER**, Excellence for the Company, is a deep - rooted ideology – not merely growing in numbers. The farsighted vision of the company is a touch lives and transform lifestyles, delivering excellence in the process. As a premier real estate development company, **KST PROMOTER** is actively pursuing excellence in South India.



STILT FLOOR PLAN

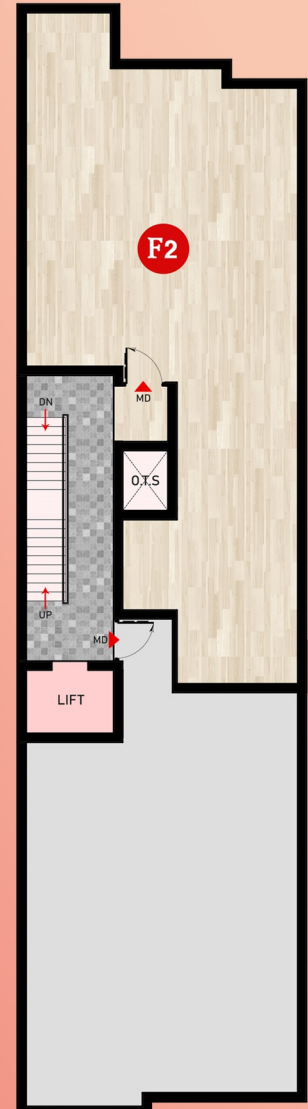


1003 - SQ.FT

East Entrance



A - BLOCK (F1)



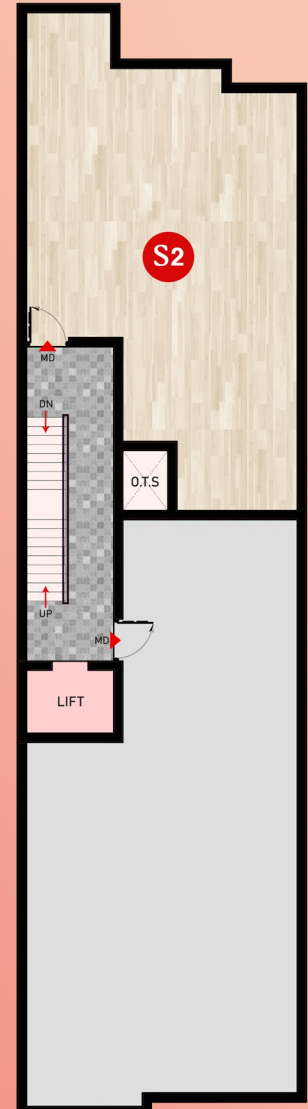


S1

East Entrance

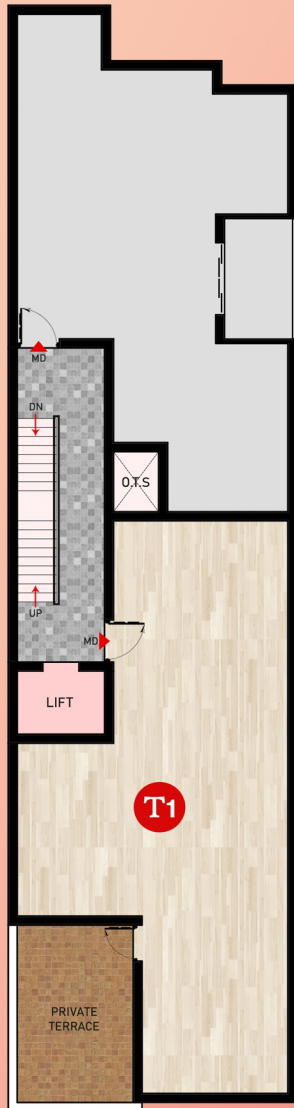
1242 - SQ.FT

A - BLOCK (S1)



A - BLOCK (S2)

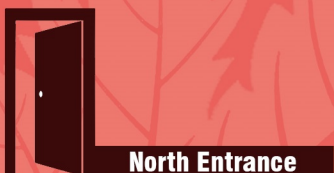
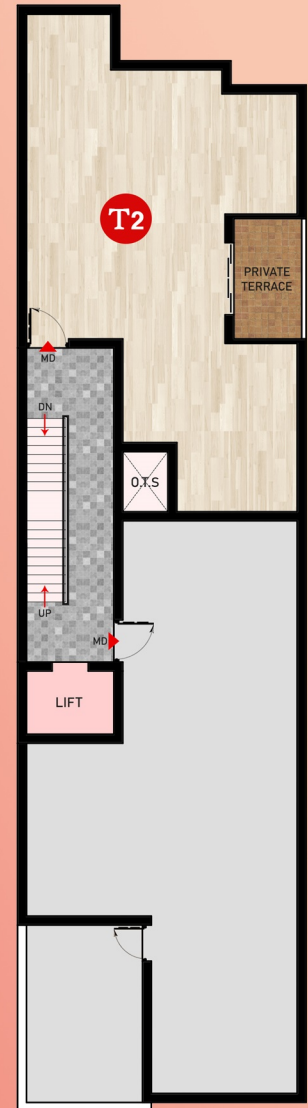
960 - SQ.FT



1050 - SQ.FT

East Entrance 

A - BLOCK (T1)





Door Phone



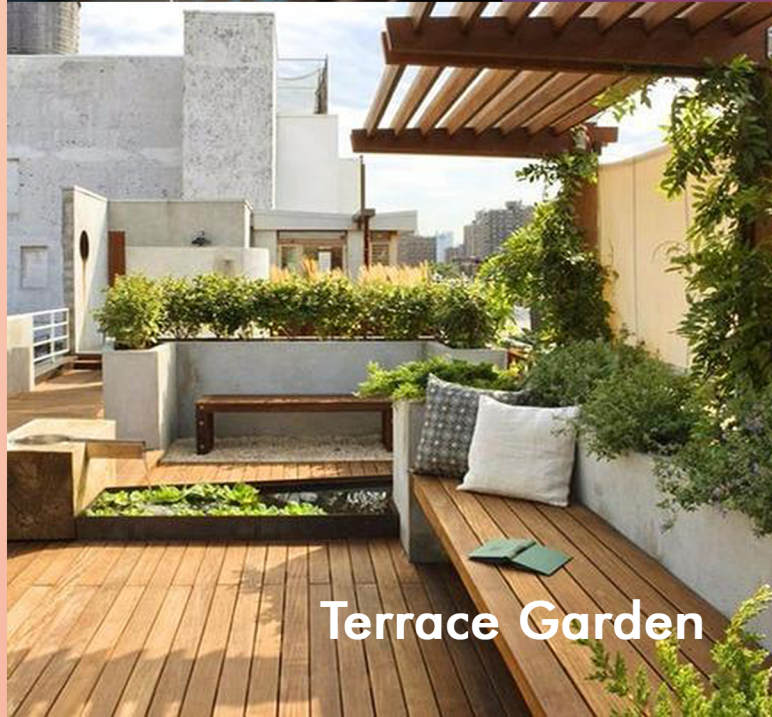
Lift Facility



100% Vaastu



CCTV



Terrace Garden



Covered Car Parking

Specification



Isolated / combined footing, R.C.C Framed structure designed by qualified professional structural Engineer.



All Interior Walls will be applied with wall putty and finished with premium paint. Ceiling will be finished in Ultra white.



Granite top, Stainless steel sink, wall tile upto 2' above granite slab.



Entire Flat 2'x2' Branded vitrified tiles in Flooring & all bathroom will be 1'x1' Anti skid tiles.



All windows are UPVC openable window with MS safety grills.



MAIN DOOR : Good Quality of Teak Wood panel finished with mela mine polish with Godrej locks.

OTHER DOORS : Membrane Doors with good quality teak frames.

TOILET DOORS : Foam Door.



External PVC piping (Astarl / Prince / Equivalent) and internal CPVC piping (Astral / Prince / Equivalent). Branded Ceramic dado tiles upto 7' height.



Granite Flooring with SS Handrails.



Concealed 3 - phase Electricity supply with Branded wiring MCB'S adequate light, fan and sufficient power points, ROMA* Switches sufficient light in common areas. Free inverter wiring.



Kst Promoter

NO.59/31, ABHAYA PARADISE, GROUND FLOOR,
DOOR NO.D, NEW COLONY 1ST MAINROAD, CHROMEPET, CHENNAI - 600044

email : sales@kstpromoter.com / Web : www.kstpromoter.com



SRI VAIGUNDAM
(EAST TAMBARAM)

ON GOING PROJECTS



SAI BRINDAVAN
(WEST TAMBARAM)



SAI GUGA (SEMBAKKAM)

COMPLETED PROJECTS



SAI ASHIRVADH
(EAST TAMBARAM)



SAI KRUPA (PALLAVARAM)



SAI AKSHATA (SELAIYUR)



SAI LAKSHMI (CHROMPET)

FOR BOOKING

8270 105 105 / 7066 96 97 98