



**KST**  
P R O M O T E R



**Blizz**

*"PERFECT HOME FOR PERFECT HAPPINESS"*











KST PROMOTER is a Real Estate Enterprises is committed to building aspirations and delivering value. In line with our philosophy of creating superior living spaces that reflect our belief, we also offer tastefully chosen plotted development spaces in selected location. This is precisely the philosophy of KST PROMOTER, Excellence for the company, is a deep - rooted ideology – not merely growing in numbers. The farsighted vision of the company is a touch lives and transform lifestyles, delivering excellence in the process. As a premier real estate development company, KST PROMOTER is actively pursuing excellence

# Stilt Floor Plan



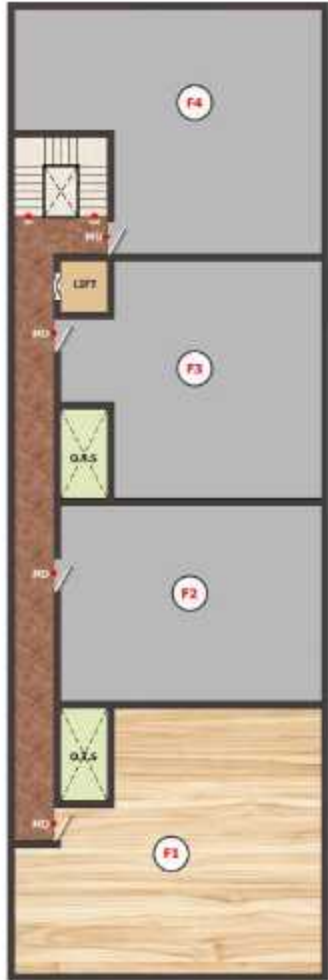


Bizz



**KST**  
PROMOTER





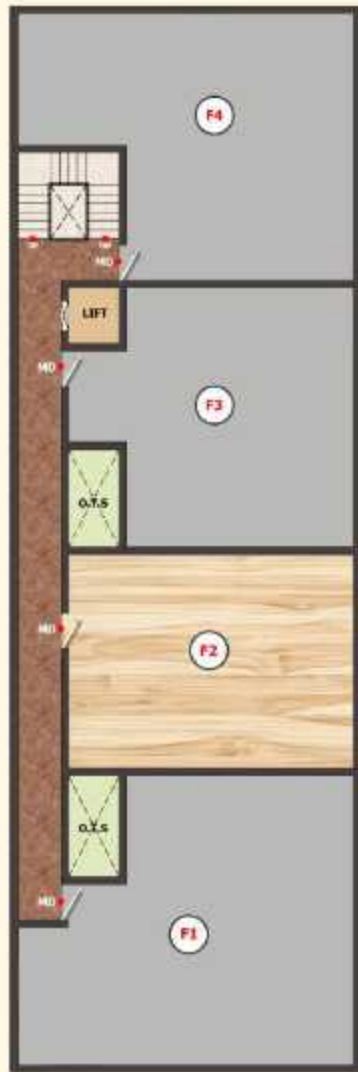
## FIRST FLOOR

**F1**

**3 BHK | 1150 Sq.ft | North Entrance**





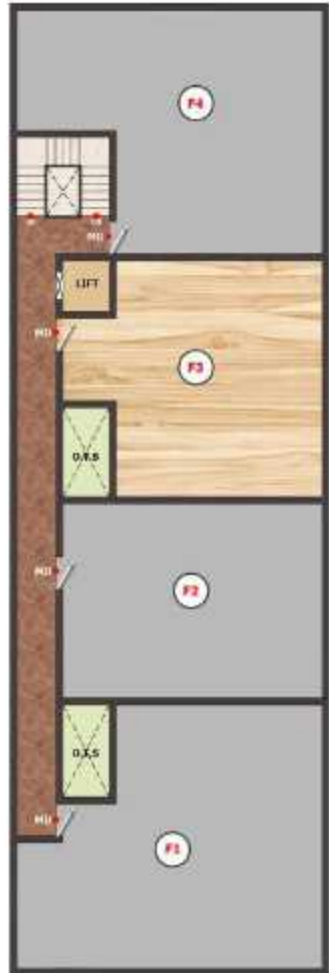


## FIRST FLOOR

**F2**

2 BHK | 816 Sq.ft | North Entrance





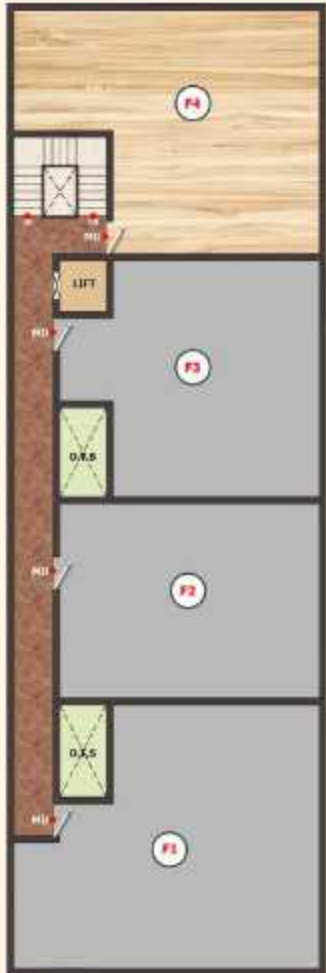
## FIRST FLOOR

**F3**

2 BHK | 865 Sq.ft | North Entrance







## FIRST FLOOR

**F4**

2 BHK | 1015 Sq.ft | North Entrance



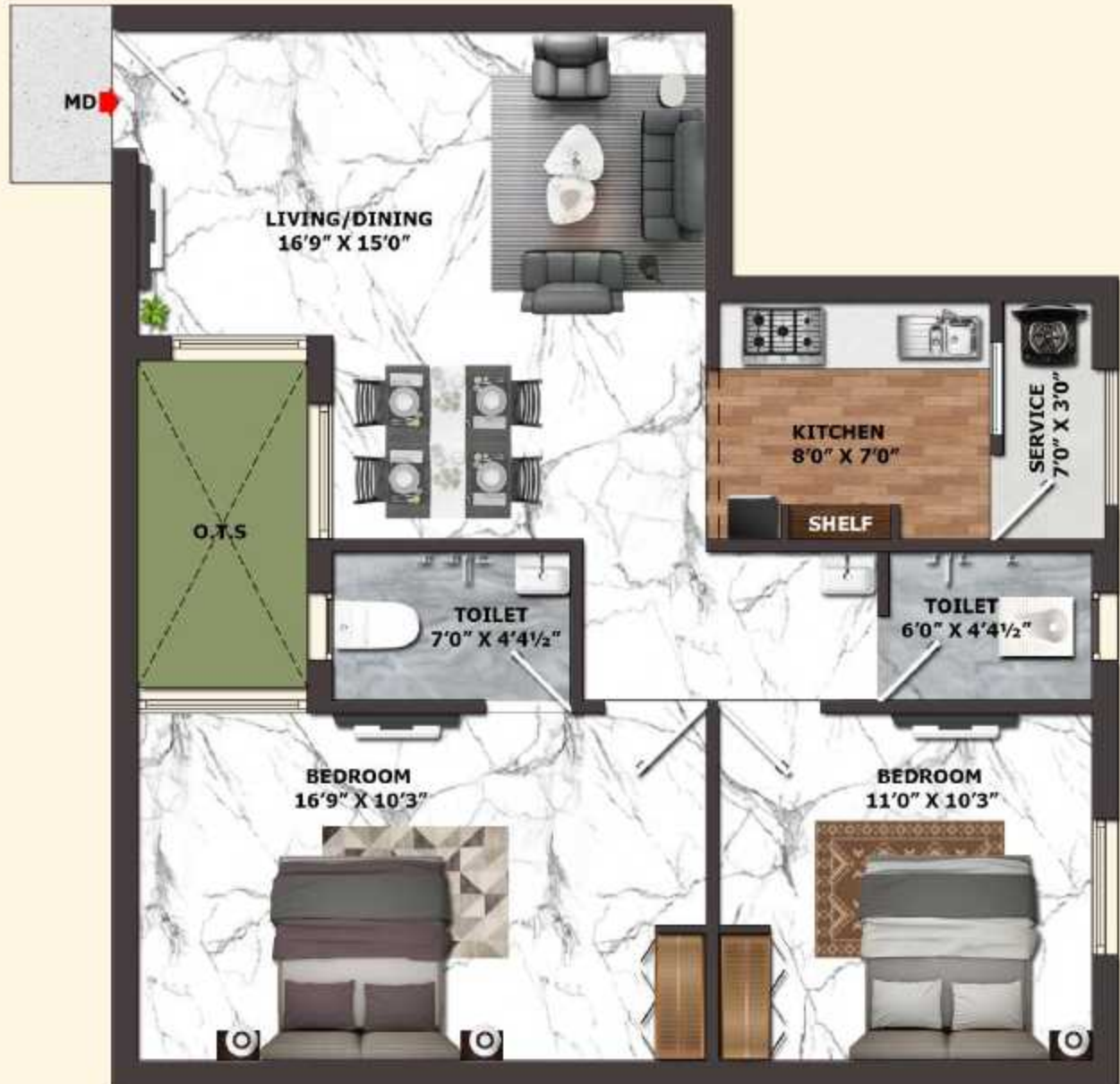


## SECOND FLOOR

S1

3 BHK | 1554 Sq.ft | North Entrance



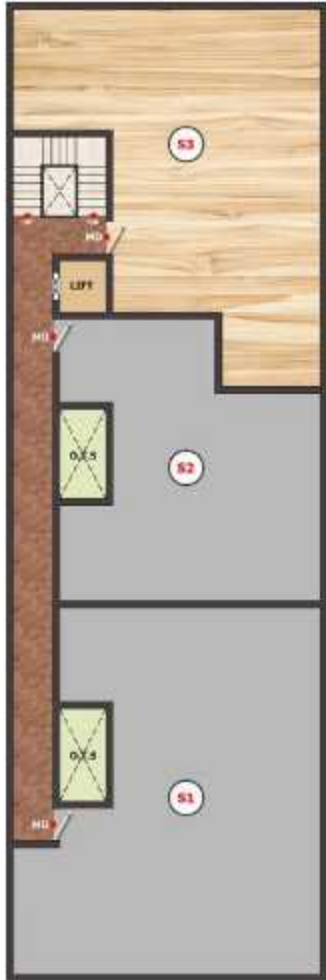


## SECOND FLOOR

**S2**

2 BHK | 969 Sq.ft | North Entrance





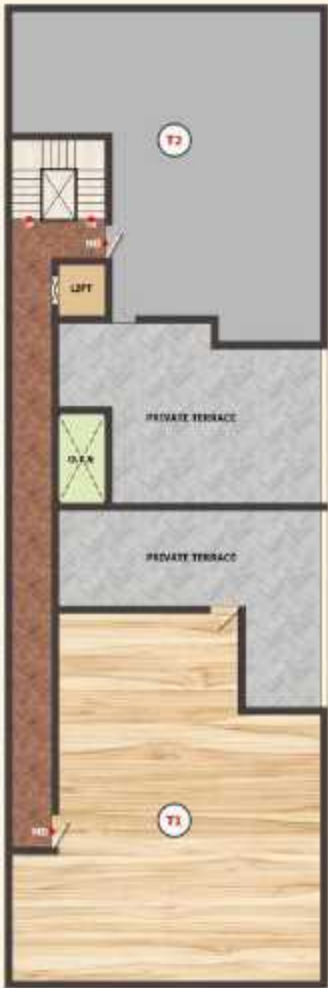
## SECOND FLOOR

S3

3 BHK | 1320 Sq.ft | North Entrance





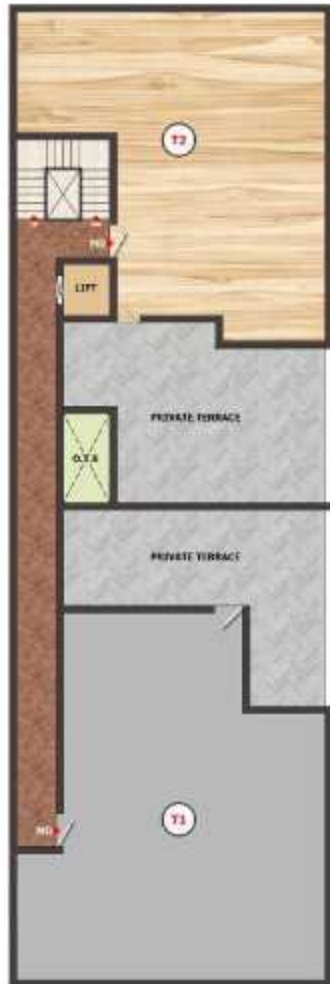


## THIRD FLOOR

**T1**

**3 BHK | 1446 Sq.ft | North Entrance**





## THIRD FLOOR

**T2**

**3 BHK | 1256 Sq.ft | North Entrance**





# Location Advantages

## SCHOOLS

Hindustan International School  
Sacred Heart Higher Secondary School  
Ramana Vidyalaya School  
Velammal Vidyalaya  
Sankara Matriculation School  
RMT International School  
NPS International School  
APL Global School  
Abacus School  
BVM Global School  
American International School

## HOSPITALS

Apollo Cradle & Children's Hospital  
Chettinad Hospital  
Gleneagles Global Health City  
Health Central Multi Speciality Clinic  
Swarnam Speciality Hospital

## COLLEGES

KCG College of Engineering  
Mohamed Sathak College  
DB Jain College  
Sathayabama University  
NIFT ( Taramani )

## ENTERTAINMENT

AGS Cinemas  
Mayajaal Multiplex  
Marina Mall  
PVR Heritage  
Arvind Theatre

## RESTAURANTS

Dindigul Thalappakatti  
Mast Kalandar  
Pizza Hut  
Hot Chips  
Madras Machan's

## IT PARKS & COMPANIES

Accenture  
PayPal  
Capgemini  
Wipro  
HCL  
Cognizant  
TCS  
Infosys  
Elcot SEZ  
Amazon

# Amenities





# Amenities

WALKING AREA



KIDS PLAY AREA



GYM



PARTY TERRACE WITH PROJECTOR

## Our Partners





## Payment Terms

- |   |   |
|---|---|
| 1) Booking Advance                                | - 5%  |
| 2) Within 10 days from Booking                    | - 10%   |
| 3) At the time of Agreement                       | - 10% ( Within 20 days from booking )                 |
| 4) On Completion of Basement / UDS Registration   | - 45% ( With 45 days from booking, which is earlier ) |
| 5) On Completion of Stilt Slab                    | - 10%   |
| 6) On Completion of corresponding Slab            | - 5%  |
| 7) On Completion of corresponding flat brick work | - 5%  |
| 8) On Completion of Plastering                    | - 5%  |
| 9) On completion of flooring                      | - 2.5%  |
| 9) One Month before handing over the flat         | - 2.5%  |

## Our Bankers







# Specifications

- Column foundation for Stilt +3 floors with plinth beam as per Structural design.
- Red brick walls around the Building.
- All Interior Wall & Ceiling will be applied with putty and finished with premium paint. The Ceiling will be finished in ultra white.
- a. Kitchen platform by Black Color Granite slabs.  
b. Providing Heavy Stainless steel sinks.  
c. 2'0" height white or plain color ceramic tiles on top of kitchen platform
- Plain or design color 2'x2' vitrified tiles (Somany or Kajaria) flooring in Living, Dining, Bedrooms, Kitchen, Balcony and service.
- All the windows are UPVC using plain or pin headed glasses with MS grill for all the windows.
- MAIN DOOR : Good quality of Teak Wood panel finished with melamine polish with  
OTHER DOORS : Membrane Doors and good quality teak frame with Lakshmi locks.  
TOILET DOORS : PVC Door.
- a. Ceramic tiles work for bathroom wall up to 7 feet height, & Anti Skid Ceramic tile flooring.  
For all bathrooms  
b. Ceramic IWC (white) in one toilet and EWC (White) in another toilet.  
One number wall mixer with shower in all bathrooms (Somany brand).  
d. CPVC Concealed pipes for water lines and chromium plated bathroom fittings in all bathrooms (Somany brand).



## Ongoing Projects



**SAI AISHWARYAM**  
( Tambaram Sanatorium )



**SAI SRINIVAS**  
( Selaiyur )



**SAI GANESH**  
( East Tambaram )



**SAI KUMARAN**  
( Pammal )



**VILLA**  
( East Tambaram )

## Completed Projects

**SAI ASHIRVADH**  
( Selaiyur )



**SAI KRUPA**  
( Pallavaram )



**SAI GUGA**  
( Sembakkam )



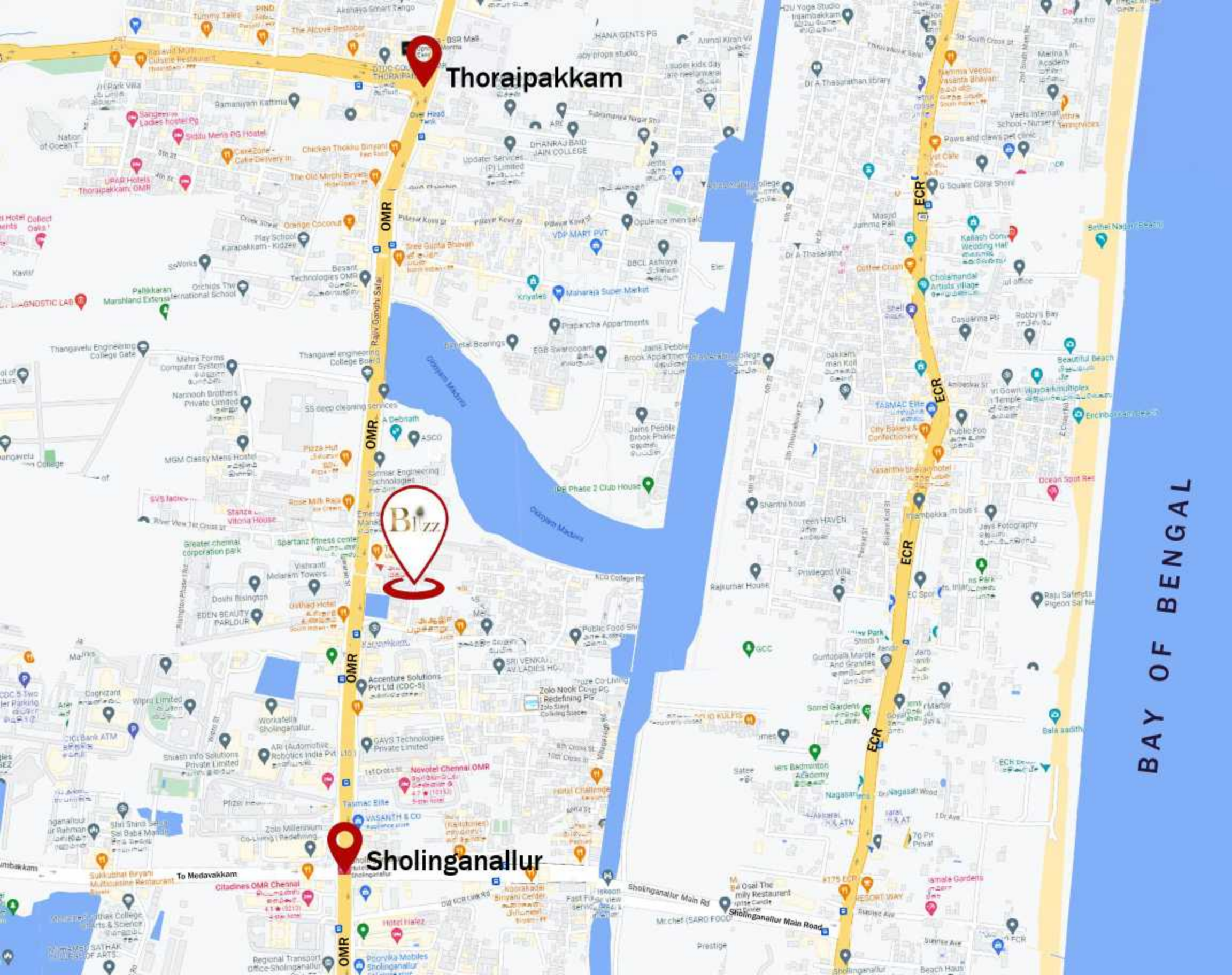
**SAI BRINDHAVAN**  
( West Tambaram )



**SRI VAIGUNDAM**  
( Selaiyur )







Thoraipakkam



Sholinganallur

BAY OF BENGAL



### **OFFICE ADDRESS:**

No.87, 151/2, Kousalya Complex, Camp Road,  
Selaiyur, Chennai - 600073.

### **CONTACT**

 **83 7003 7003**

 [www.kstpromoter.com](http://www.kstpromoter.com)

 [sales@kstpromoter.com](mailto:sales@kstpromoter.com)

### **SITE ADDRESS:**

No: 5, Gangai Amman Koil Street,  
Karapakkam Village, Sholinganallur, Chennai - 600097.